

Castles



ASKING PRICE

£695,000

Tenniswood Road

Enfield, EN1 3HE

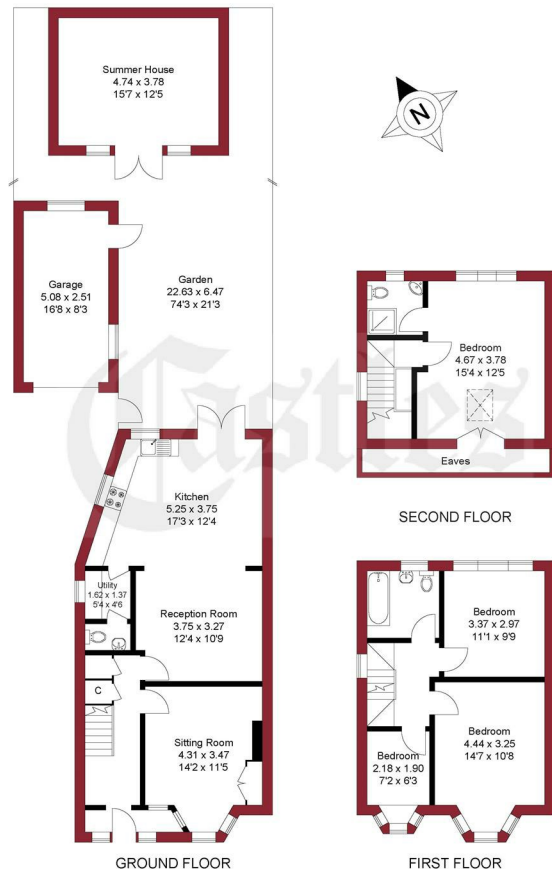
PROPERTY SUMMARY

A well presented and extended 4 bedroom semi-detached bay fronted family house located on the ever popular Willow Estate within easy reach of local schools and less than 1 mile from Enfield Town train station and shopping centre. This spacious home is offered for sale chain free and viewing is highly recommended.

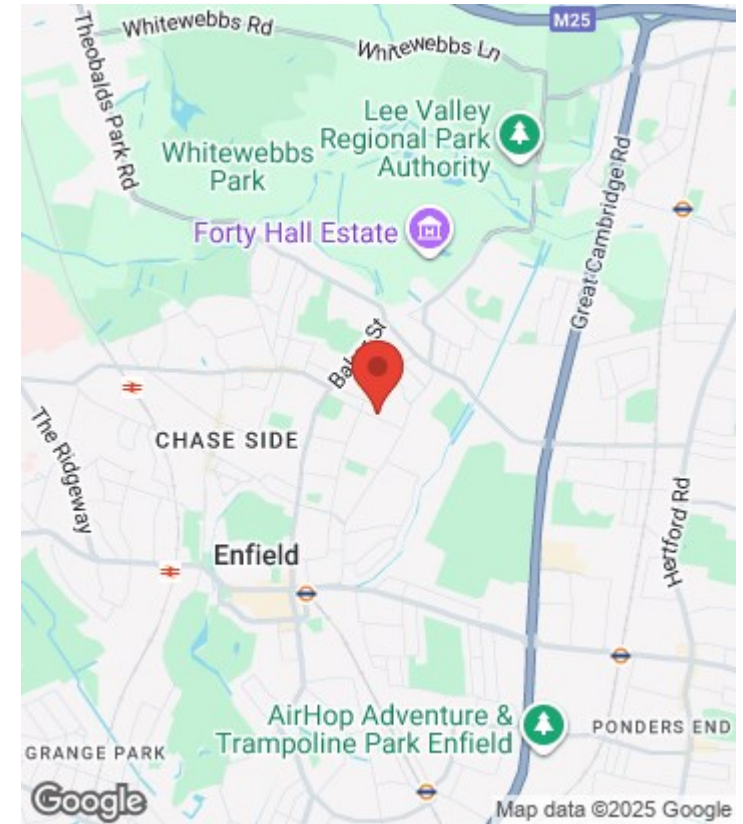




APPROXIMATE GROSS INTERNAL AREA 120.33 sqm / 1295.22 sqft
(Excluding Summer House, Garage & Eaves)
151.0 sqm / 1625.35 sqft (Including Summer House & Garage)



For a guide to the area
please scan this code for
more information



House
Freehold
Council: Enfield
Council Tax Band: E

Agents Note: Whilst every care has been taken to prepare these particulars, they are for guidance purposes only. All measurements are approximate and are for general guidance purposes only and whilst every care has been taken to ensure their accuracy, they should not be relied upon and potential buyers/tenants are advised to recheck the measurements



OFFICE ADDRESS
243 - 245 Hertford Road
Enfield
London
EN3 5JJ

OFFICE DETAILS
0208 804 8000
enfield@castles.london
<https://www.castles.london>

